

Space

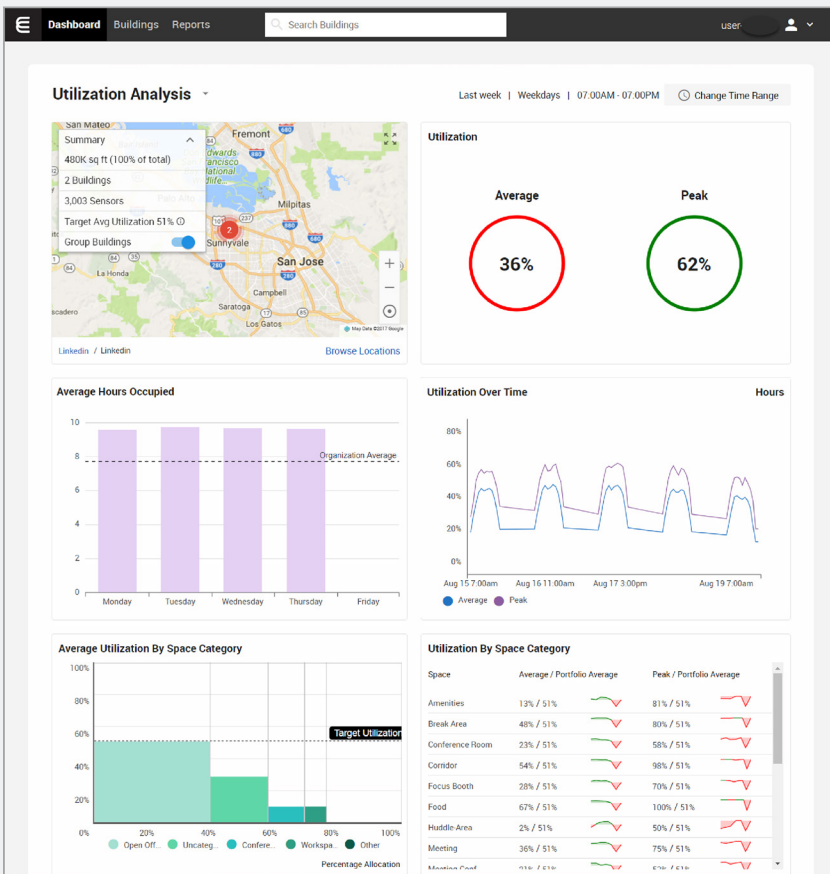
Analysis of real estate usage and occupancy patterns is now possible using real-time data collected 24/7, 365 days a year, across entire buildings and portfolios.

The Enlighted Space application, powered with the data collected by Enlighted Sensors, enables organizations to understand and optimize their real estate utilization while improving productivity.

Previously, real estate decisions were made with limited data, sometimes relying on expensive research projects with people manually collecting data to capture a snapshot of building usage. This data would quickly

become stale, limiting the ability of decisionmakers to act on up-to-date information.

The Enlighted IoT platform, together with the Space application, digitizes and automates data collection and analysis. Enlighted’s dense sensor network of one sensor per light fixture collects data continuously across buildings and campuses. Data is analyzed and presented in comprehensive reports.



The Enlighted Space advantage

- Make decisions based on robust occupancy data
- Optimize workspaces
- Reduce real estate expenses
- Avoid unneeded office expansion
- Identify trends signaling the need for expanded workspace

Space utilization analytics provide insights using data collected 24/7 across the building.

Occupancy-based utilization

How Enlighted Space works

Enlighted's smart sensors collect occupancy data, and proprietary tracking algorithms monitor the patterns of motion caused by people walking or staying still. The Enlighted Space application then analyzes and reports on space occupancy and movement over specified time intervals.

Data is displayed in dashboards, charts, and graphs that identify trends in the occupancy rates and space usage, giving building operators unprecedented access to detailed occupancy information and motion patterns for any time period. Enlighted Space also non-intrusively measures usage rates of workspaces, helping flag problems like underutilized or inefficiently used areas.

Features

- Easy-to-deploy cloud-hosted SaaS-based application
- Key utilization metrics and conference room dashboards
- Detailed occupancy analysis
- Data-driven visual analysis of occupant movement
- Customizable reports and graphs

The Enlighted IoT Platform

Enlighted brings the Internet of Things to buildings by deploying cloud-connected sensors, advanced networking, and big data analytics applications. The infrastructure pays for itself through energy savings of up to 90 percent. Enlighted dense sensor network of one sensor per light fixture and ceiling-mounted positioning captures the most robust data in the industry. This data powers Enlighted solutions for building space management, real-time location services, occupancy-based HVAC, lighting control, and more.

Gain visibility

- Executive dashboards
- Visual analysis of actual motion trails
- After-hours activities audits and video forensic support

Improve problem areas

- Daily building monitoring
- Comparative benchmarking
- Causal analysis

Product Codes

SPC-SWC: License Subscription Pricing

Data privacy

The Enlighted Space application collects and stores occupancy data captured by the Enlighted Sensors and saved in the Enlighted Energy Manager platform. For information specific to the sensors or platform, refer to the corresponding specification sheet.

The Space application stores the organization name, occupancy data, floor maps, and organizational facility information for providing services. The application tracks user login, logout events, user IP address, and application pages accessed by the users.



Building Robotics, Inc.,
a Siemens Company

Turn Everyday Spaces into Extraordinary Places

Wherever space, people and work meet, Enlighted empowers organizations with the technology to transform real estate spaces into regenerative places that fuel positive impact for people, portfolio, and our planet.

Email: sales@enlightedinc.com | Website: www.enlightedinc.com
3979 Freedom Circle, #210, Santa Clara, CA 95054 | Phone: 650.964.1094